

10-630mm² Silver Mechanical Cable Lugs High Current Rating Electrical Connections DT LUGS

Our Product Introduction

Basic Information

- Place of Origin: China
- Brand Name: TLC
- Certification: UL, CUL, CE
- Model Number: DT, HUP
- Minimum Order Quantity: 1000
- Price: USD
- Packaging Details: PE bag, Carton
- Delivery Time: 5-30 working days
- Payment Terms: T/T
- Supply Ability: 300-800K pcs per month



Product Specification

- Product Name: Cable Lugs
- Material: Copper
- Application: Electrical Connections
- MOQ: 1000 Pieces
- Surface Treatment: Tin Plated
- Type: Crimped
- Current Rating: High
- Color: Silver
- Highlight: **630mm² Mechanical Cable Lugs,
Mechanical Cable Lugs 10mm²,
High Current mechanical terminal lugs 10mm²**

for more products please visit us on cableslugs.com

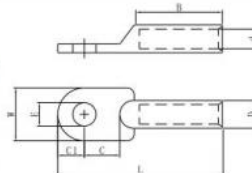
Product Description



Non-Insulated - Copper Lugs

DT LUGS TERMINALS

Material
Terminal Body: Copper



WIRE RANGE	STUD SIZE		ITEM NO	DIMENSION mm(inch)								P/N	QTY BOX
	mm ² (A.W.G)	Metric	American	E	D	d	W	B	L	C1	C		
10 (8)	6	1/4	DT-A-10-6	6.5	8.0	5.0	10.0	30.0	50.0	9.0	9.0	T-12098601	200
16 (6)	6	1/4	DT-A-16-6		9.0	6.0	12.0	31.0	60.0	10.0		T-12098602	
25 (4)	6	1/4	DT-A-25-6		10.0	7.0	14.0	34.0		11.0		T-12098603	
35 (2)	8	5/16	DT-A-35-8	8.4	12.0	8.5	16.0	36.0	66.0	9.0	14.0	T-12098604	100
50 (1/0)	8	5/16	DT-A-50-8		14.0	10.0	19.0	40.0	72.0	11.0		T-12098605	
70 (2/0)	10	3/8	DT-A-70-10	10.5	16.0	12.0	22.0	42.0	80.0	15.0	12.0	T-12098606	50
95 (3/0)	10	3/8	DT-A-95-10		18.0	13.0	25.0	46.0	87.0	17.0		T-12098607	
120 (4/0)	12	1/2	DT-A-120-12	13.0	20.0	15.0	28.0	48.0	96.0	19.0	16.0	T-12098608	30
150 (250/300)	12	1/2	DT-A-150-12		22.0	16.0	32.0	52.0	103.0	20.0		T-12098609	
185 (300/350)	16	5/8	DT-A-185-16	16.5	25.0	18.0	36.0	55.0	115.0	23.0	19.0	T-12098610	10
240 (400/450)	16	5/8	DT-A-240-16		27.0	20.0	40.0	60.0	120.0		20.0	T-12098611	
300 (500)	16	5/8	DT-A-300-16	17.0	31.0	24.0	45.0	65.0	135.0	31.0		T-12098612	5
400 (600/750)	16	5/8	DT-A-400-16		34.0	26.0	50.0	70.0	150.0	34.0		T-12098613	
500 (800/1000)	16	5/8	DT-A-500-16		38.0	30.0	56.0	75.0	170.0	38.0	24.0	T-12098614	2
630 (1000/1250)	16	5/8	DT-A-630-16		45.0		65.0	85.0	210.0			T-12098615	

Product Description:

Lugs terminals are important components in electrical systems. They provide secure and reliable connections between wires or cables and electrical devices or equipment. It is essential that these lugs terminals are properly installed in order for electrical performance and safety to be optimal.

Improper installation of these lugs terminals can lead to electrical short-circuiting and consequently cause safety hazards such as electric shocks or even fires. It is therefore important that they are installed according to the specifications, taking into account the types of wire or cables and the electrical device or equipment.

In conclusion, lugs terminals are integral components of electrical systems and their proper installation is essential for optimal electrical performance and safety.

Features:

The combination of **lugs and terminals** can provide strong, stable, and reliable electrical connections. This is essential in ensuring efficient transmission of electrical power or signals between devices. Proper installation of lugs and terminals can maximize the performance and reliability of the connection, eliminating the chance of loose connections, which can negatively affect performance, cause device overheating, or even lead to complete electrical failure.

Applications:

Lugs terminals are essential components in electrical systems. They are critical for providing a safe and reliable connection between wires or cables and various electrical devices or equipment.

The lugs are small metal connectors that are crimped or soldered onto the ends of wires. In order to suit diverse types and gauges of wires and terminals, these lugs come in a range of sizes and shapes.

Support and Services:

Mechanical Cable Lugs offer technical support and services to ensure the product meets the customer's needs. Technical support is available via phone, email, and online chat. Our technical support staff is knowledgeable and ready to answer any questions you may have. They can help you with product selection, installation, troubleshooting, and more.

We also offer a variety of services to ensure that you get the best possible performance from your Mechanical Cable Lugs. Our services include installation assistance, repair and maintenance, and warranty coverage. We can also provide consultation and design services to help you get the most out of your product.

At Mechanical Cable Lugs, we are committed to providing the highest quality products and services to our customers. We strive to make sure that your experience is as positive and hassle-free as possible. If you have any questions or concerns about our products or services, please do not hesitate to contact us.

Packing and Shipping:

Mechanical cable lugs are packaged and shipped in strong cardboard boxes, to ensure maximum protection during transit. The boxes are sealed with tape for extra security and are labeled clearly with the contents and shipping information. The boxes are then wrapped in protective plastic wrap to protect against moisture and other environmental elements. Once packaged, the boxes are transported to their designated location via truck, train, or air freight.

FAQ:

Q: What is the brand name of your Mechanical Cable Lugs?

A: Our Mechanical Cable Lugs are branded as TLC.

Q: What are the model numbers of your Mechanical Cable Lugs?

A: Our Mechanical Cable Lugs are available in DT and HUP models.

Q: Where are your Mechanical Cable Lugs manufactured?

A: Our Mechanical Cable Lugs are manufactured in China.

Q: What certifications do your Mechanical Cable Lugs have?

A: Our Mechanical Cable Lugs are certified to UL, CUL and CE standards.

Q: What is the minimum order quantity for your Mechanical Cable Lugs?

A: The minimum order quantity for our Mechanical Cable Lugs is 1000 pieces.



TLC TERMINALS TECHNOLOGY LIMITED



+8615338876153



joe@t-terminals.com



cableslugs.com

4B Huafeng Industrial Park Baolong 1 Road Baolong Street, Longgang District, Shenzhen City