

Silver M3-M8 Screw Lug Terminal With RoHS Certificate For Solar System

Our Product Introduction

Basic Information

- Place of Origin: China
- Brand Name: TLC
- Certification: CE
- Model Number: TLC, RNB
- Minimum Order Quantity: 2000
- Price: USD
- Packaging Details: bag, carton package
- Delivery Time: 5-30 working days
- Payment Terms: T/T
- Supply Ability: 1KK pcs per month



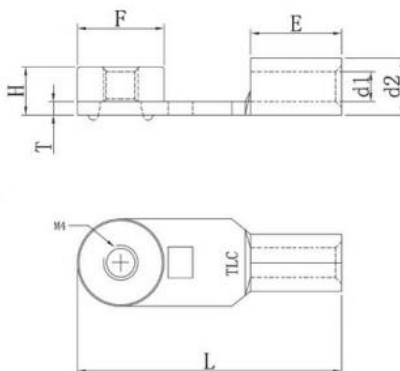
Product Specification

- Contact Resistance: $\leq 3\text{m}\Omega$
- Size: M3-M8
- Application: Solar System
- Temperature Range: $-40 \sim +105$
- Material: Copper
- Certificate: CE, RoHS
- Color: Silver
- Product Name: Screw Lug Terminal
- Highlight: **Silver M8 Screw Lug Terminal,
Silver M3 Screw Lug Terminal,
RoHS Certificate screw terminal lug**

for more products please visit us on cableslugs.com



RNB-LS LUGS TERMINAL



8 (8)	RNB8-M4-LS(H7.5)	4.3	7.5	10.5	10.0	30.5	1.5	T-12090113	400
	RNB8-M4-LS(H 7.8)							T-12125132	
	RNB8-M4-LS(H 5.4)							T-12125144	
	RNB8-M4-LS(H 11.0)							T-12125146	
	RNB8-M4-LS(H 12.0)							T-12125147	
	RNB8-M4-LS(H 13.0)	5.0	8.0					/	
	RNB8-M4-LS(H 12.0)	5.0						/	
	RNB8-M5-LS(H 7.0)	4.3	7.5					/	
	RNB8-M5-LS(H 7.2)							/	
	RNB8-M5-LS(H 7.5)							/	
	RNB8-M5-LS(H 7.8)							T-12125140	
	RNB8-M5-LS(H 9.2)							T-12125136	
14 (6)	RNB14-M5-LS(H 7.8)			5.9	8.9	10.5	12.0	35.0	1.5
	RNB14-M6-LS(H 5.6)	5.8	9.0	11.0		33.0	T-12125104		
22 (4)	RNB22-M6-LS(H 7.0)	7.5	11.5	12.5	10.0	34.0	1.8	T-12125105	200
38 (2)	RNB38-M6-LS(H 7.0)	9.5	13.5	14.5		43.0		T-12125106	200
	RNB38-M6-LS(H 8.6)				13.0			T-12125107	200

Product Description:

A strong and stable electrical connection is essential for the successful transportation of electrical power or signals between two devices. This is achieved through the use of screw and terminal lugs. If these lugs and terminals are not correctly installed, they can cause poor performance, overheating, or even power outages. To prevent this, it is imperative to ensure that the installation is done properly. By fixing screws and terminal lugs, the connection will be strong and durable, and guarantee maximum electrical performance while reducing wear and tear. Moreover, the contact points created between the devices will be secure and reliable, thus decreasing the chance of misconnection or other unforeseen issues.

In short, the combination of screw and terminal lugs is important for achieving a secure, reliable, and strong electrical connection that will ensure efficient transmission of power or signals between devices. It is important to note that for these connections to work properly, they must be installed with precision and accuracy.

Features:

Screw lugs terminals are integral components for **maximizing electrical performance** and **ensuring safety**. They enable a secure and reliable connection between wires or cables and electrical devices or equipment. This connection is necessary for optimized electrical performance and to safeguard against potential accidents.

For these reasons, proper installation of screw lugs terminals is **paramount**, so individuals should be knowledgeable about the proper way to install them.

Technical Parameters:

Product Name	Screw Lug Terminal
Material	Copper
Size	M3-M8
Color	Silver
Contact Resistance	≤3mΩ
Temperature Range	-40 ~+105
Application	Solar System
Certificate	CE, RoHS

Applications:

Screw lugs terminals are an irreplaceable element in electrical systems. Their part in connecting wires or cables to a variety of electrical hardware or machinery is indispensable.

Screw lugs are tiny metal connectors that are crimped or soldered onto the ends of wires. Made to ensure a reliable and robust link to terminals, lugs come in various sizes and forms, suitable for diverse wire gauges and terminal varieties.

Customization:

Customized Screw Lug Terminal

TLC and RNB screw lug terminals are electrical connectors used to terminate cables and wires. Our series of cable lugs screws are made from copper with silver color, and have a temperature range of -40 to +105 . These connectors offer low contact resistance ≤3mΩ as well as CE certifications.

Brand Name: TLC

Model Number: TLC, RNB

Place of Origin: China

Certification: CE

Minimum Order Quantity: 2000

Price: USD

Packaging Details: bag, carton package

Delivery Time: 5-30 working days

Payment Terms: T/T

Supply Ability: 1KK pcs per month

Temperature Range: -40 ~+105

Color: Silver

Material: Copper

Contact Resistance: ≤3mΩ

Product Name: Screw Lug Terminal

At TLC, we are committed to providing customized Screw Lug Terminal solutions for our customers. Our experienced engineers are available to help you find the best solution for your cables lugs screws and Screw Lug Terminal needs.

Support and Services:

Technical Support & Service for Screw Lug Terminal

We provide professional technical support and service for our screw lug terminal products, which are essential components for a variety of power and signal connections. Our knowledgeable staff is ready to provide you with the support you need.

Technical Guidance

Our technical guidance services are designed to provide you with the necessary information and expertise to select the right screw lug terminal for your application. Our experts can provide you with advice and design suggestions to ensure that you have the best solution for your needs.

Installation & Maintenance

Our experienced team of technicians can provide you with the necessary installation and maintenance services for your screw lug terminal. Our technicians will ensure that your terminal is installed correctly and that it is properly maintained to ensure optimal performance.

Repair & Replacement

We offer repair and replacement services for our screw lug terminals. Our experienced technicians can diagnose and repair any issues with your terminal, or provide you with a replacement if needed. Our technicians have the knowledge and expertise to ensure that your terminal is functioning correctly.

Packing and Shipping:

The Screw Lug Terminal will be packaged in a sealed plastic bag and shipped in a cardboard box. The box will be labeled with the product's name and the manufacturer's logo.

The box will also include a set of instructions and safety warnings. The box will be taped securely and labeled with a barcode and tracking information.

The box will be placed in a larger shipping container for protection against weather and other external forces. The container will be labeled with the same information as the box.

FAQ:

Q1: What is the brand name of your product?

A1: The brand name of our product is TLC.

Q2: What is the model number of your product?

A2: The model number of our product is TLC and RNB.

Q3: Where is your product made?

A3: Our product is made in China.

Q4: Does your product have CE certification?

A4: Yes, our product has CE certification.

Q5: What is the minimum order quantity for your product?

A5: The minimum order quantity for our product is 2000. The price is USD. The package is bag or carton package. The delivery time is 5-30 working days. The payment terms is T/T. The supply ability is 1KK pcs per month.



TLC TERMINALS TECHNOLOGY LIMITED



+8615338876153



joe@t-terminals.com



cableslugs.com

4B Huafeng Industrial Park Baolong 1 Road Baolong Street, Longgang District, Shenzhen City