



## 0.5-120mm<sup>2</sup> Tin Plated Tubular Cable Lugs For Electrical Connections

Our Product Introduction

for more products please visit us on [cableslugs.com](http://cableslugs.com)

### Basic Information

- Place of Origin: China
- Brand Name: TLC
- Model Number: T
- Minimum Order Quantity: 1000 pcs
- Price: USD
- Packaging Details: Carton
- Delivery Time: 5-30 days
- Payment Terms: T/T
- Supply Ability: 1KK PCS PER MONTH



### Product Specification

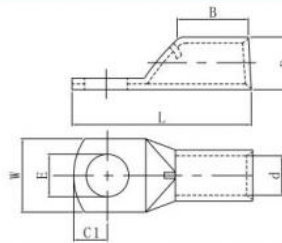
- Material: Copper
- Temperature Range: -40 ~+105
- Color: Silver
- Tin Plated: Yes
- Cable Range: 0.5-120mm<sup>2</sup>
- Highlight: **0.5-120mm<sup>2</sup> Tin Plated Tubular Cable Lugs, TLC Tubular Cable Lugs for Electrical Connections, 0.5-120mm<sup>2</sup> mechanical terminal lugs**



## Non-Insulated - Copper Lugs

## TUBULAR LUGS TERMINALS

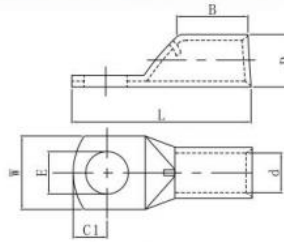
Material  
Terminal Body: Copper  
Plating: Tin



WIRE RANGE	STUD SIZE		ITEM NO	DIMENSION mm							P/N	QTY BOX	
	mm2 (A.W.G)	Metric		Amerian	E	D	d	W	B	C1			L
0.5-1.5 (22-16)	4	#8	T1.5-4	4.3	4.0	2.4	8.7	7.0	4.5	19.0	T-12097101	1000	
	5	#10	T1.5-5	5.3			10.0		5.5	20.0	T-12097102		
	6	1/4	T1.5-6	6.4			10.0		5.5	20.0	T-12097103		
1.5-2.5 (16-14)	4	#8	T2.5-4	4.3	4.3	2.7	8.7	7.0	4.0	19.0	T-12097104		
	5	#10	T2.5-5	5.3			10.3		5.0	21.0	T-12097106		
	6	1/4	T2.5-6	6.4			12.0		6.0	23.0	T-12097107		
	8	5/16	T2.5-8	8.3			12.0		6.0	23.0	T-12097107		
2.5-4 (14-12)	4	#8	T4-4	4.3	4.8	3.1	8.7	9.5	4.5	21.5	T-12097108		
	5	#10	T4-5	5.3			10.3		5.0	23.5	T-12097109		
	6	1/4	T4-6	6.4			10.3		5.0	23.5	T-12097110		
	8	5/16	T4-8	8.3			12.0		7.0	28.5	T-12097111		
4-6 (12-10)	4	#8	T6-4	4.3	5.5	3.8	10.3	10.0	5.2	26.0	T-12097112	1000	
	5	#10	T6-5	5.3						26.0	T-12097113		
	6	1/4	T6-6	6.4						26.0	T-12097114		
	8	5/16	T6-8	8.5			13.9		7.0	29.0	T-12097115		
	10	3/8	T6-10	10.5					7.2	29.0	T-12097116		
10 (8)	4	#8	T10-4	4.3	6.9	4.7	11.9	11.5	5.5	27.5	T-12097117		
	5	#10	T10-5	5.3						27.5	T-12097118		
	6	1/4	T10-6	6.4						27.5	T-12097119		
	8	5/16	T10-8	8.3			13.5		6.8	30.5	T-12097120		
	10	3/8	T10-10	10.5			15.0		7.3	30.5	T-12097121		
	12	1/2	T10-12	13.2			17.0		8.8	34.0	T-12097122		

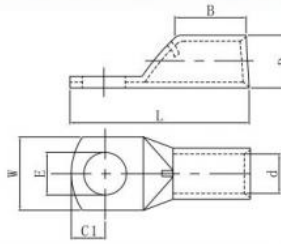
## TUBULAR LUGS TERMINALS

**Material**  
Terminal Body: Copper  
Plating: Tin



WIRE RANGE	STUD SIZE		ITEM NO	DIMENSION mm						P/N	QTY BOX			
	mm2 (A.W.G)	Metric		Amerian	E	D	d	W	B			C1	L	
16 (6)	4	#8	T16-4	4.3	7.8	5.6	12.0	12.0	5.5	27.5	T-12097123	500		
	5	#10	T16-5	5.3							T-12097124			
	6	1/4	T16-6	6.4							T-12097125			
	8	5/16	T16-8	8.3			13.5		6.8	31.0	T-12097126			
	10	3/8	T16-10	10.5			16.0		7.5	32.0	T-12097127			
	12	1/2	T16-12	13.2			17.0		10.0	37.5	T-12097128			
25 (4)	4	#8	T25-4	4.3	9.5	7.1	14.0	13.5	6.8	34.0	T-12097129	500		
	5	#10	T25-5	5.3							T-12097130			
	6	1/4	T25-6	6.4							T-12097131			
	8	5/16	T25-8	8.3			16.0		7.0	37.0			T-12097132	
	10	3/8	T25-10	10.5					8.5				T-12097133	
	12	1/2	T25-12	13.2			18.0		10.0	40.0	T-12097134			
35 (2)	6	1/4	T35-6	6.4	11.0	8.2	16.5	16.0	8.5	39.0	T-12097135	200		
	8	5/16	T35-8	8.3							T-12097136			
	10	3/8	T35-10	10.5					10.0	43.0			T-12097137	
	12	1/2	T35-12	13.2			18.0		12.0				T-12097138	
	14	9/16	T35-14	14.5			20.0		48.0		T-12097139			
	16	5/8	T35-16	16.5			23.0				T-12097140			
50 (1/0)	6	1/4	T50-6XX	6.4	13.5	10.5	18.0	20.0	8.5	45.0	T-12097141	200		
	8	5/16	T50-8XX	8.3							T-12097142			

## TUBULAR LUGS TERMINALS

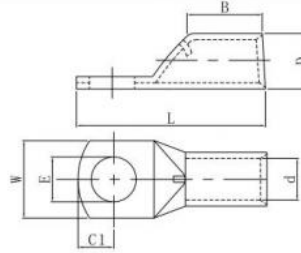


**Material**  
Terminal Body: Copper  
Plating: Tin

WIRE RANGE	STUD SIZE		ITEM NO	DIMENSION mm							P/N	QTY BOX		
	mm2 (A.W.G)	Metric		Amerian	E	D	d	W	B	C1			L	
50 (1/0)	6	1/4	T50-6	6.4	12.5	9.5	18.0	20.0	8.5	45.0	T-12097143	200		
	8	5/16	T50-8	8.3					8.0		T-12097144			
	10	3/8	T50-10	10.5							T-12097145			
	12	1/2	T50-12	13.2					10.0		T-12097146			
	14	9/16	T50-14	14.5					22.0		54.0		T-12097147	
	16	5/8	T50-16	16.5					25.0		23.0		12.5	62.0
70 (2/0)	6	1/4	T70-6	6.4	15.0	11.5	22.0	20.0		47.6	T-12097149	50		
	8	5/16	T70-8	8.3					8.0		T-12097150			
	10	3/8	T70-10	10.5							T-12097151			
	12	1/2	T70-12	13.2					10.0		T-12097152			
	14	9/16	T70-14	14.5							T-12097153			
	16	5/8	T70-16	16.5					15.5		62.6		T-12097154	
95 (3/0)	8	5/16	T95-8	8.3	17.0	13.5	25.0	22.0	10.0	55.8	T-12097155	30		
	10	3/8	T95-10	10.5							T-12097156			
	12	1/2	T95-12	13.2					10.5		T-12097157			
	14	9/16	T95-14	14.5						66.8			T-12097158	
	16	5/8	T95-16	16.5					16.0				T-12097159	
120 (4/0)	8	5/16	T120 - 8	8.3	20.0	15.6	29.0	27.0		15.8	71.5	T-12097160	30	
	10	3/8	T120 - 10	10.5								T-12097161		
	12	1/2	T120 - 12	13.2								T-12097162		
	14	9/16	T120 - 14	14.5						17.0		T-12097163		
	16	5/8	T120 - 16	16.5					17.0			T-12097164		

## TUBULAR LUGS TERMINALS

Material  
Terminal Body: Copper  
Plating: Tin



WIRE RANGE	STUD SIZE		ITEM NO	DIMENSION mm							P/N	QTY BOX
	mm2 (A.W.G)	Metric		Amerian	E	D	d	W	B	C1		
150 (250/300)	8	5/16	T150 - 8	8.4	21.0	16.5	30.6	32.0	16.0	78.0	T-12097165	20
	10	3/8	T150 - 10	10.5							T-12097166	
	12	1/2	T150 - 12	13.2							T-12097167	
	14	9/16	T150 - 14	14.5							T-12097168	
	16	5/8	T150 - 16	16.5							T-12097169	
185 (300/350)	10	3/8	T185 - 10	10.5	23.6	18.4	34.0	34.0	17.0	84.0	T-12097170	20
	12	1/2	T185 - 12	13.2							T-12097171	
	14	9/16	T185 - 14	14.5							T-12097172	
	16	5/8	T185 - 16	16.5							T-12097173	
240 (400/450)	10	3/8	T240 - 10	10.5	26.4	21.2	38.5	37.0	17.0	90.0	T-12097174	10
	12	1/2	T240 - 12	13.2							T-12097175	
	14	9/16	T240 - 14	14.5							T-12097176	
300 (500/0)	10	3/8	T300 - 10	10.5	28.6	23.4	42.0	40.0	17.5	96.0	T-12097177	10
	12	1/2	T300 - 12	13.2							T-12097178	
	14	9/16	T300 - 14	14.5							T-12097179	
	16	5/8	T300 - 16	16.5			43.0				T-12097180	
120 (4/0)	8	5/16	T120-8-XX	8.5	20.0	16.0	19.0	26.0	14.0	64.8	T-12097184	30
	8	5/16	T120-8-XKD						11.0	61.8	T-12097189	
	8	5/16	T120-8-LXX						29.5	9.0	68.0	
	10	3/8	T120-10-LXX			15.6		T-12099916				

### Product Description:

Cable Lugs are very important components when it comes to electrical systems. They are essential for making connections between wires or cables and various electrical devices or equipment.

Tube Lugs are small metal connectors that are fastened to the ends of wires either through crimping or soldering. This enables them to form a secure and solid connection with terminals. Different types of lugs are available in the market that come in different sizes and shapes, making them suitable for different types of wires and terminal arrangements.

### Applications:

**Tubular Cable Lugs** are widely used in various electrical and mechanical applications due to their excellent electrical properties and durable construction. TLC brand tubular cable lugs are made of copper with silver color and tin plated, with temperature range - 40 ~+105 . The size of TLC cable lugs is 10mm<sup>2</sup>. The model number is TLK. We offer 1000 pcs as minimum order quantity with carton package. We guarantee delivery within 5-30 days. With copper material and fine workmanship, the lugs cable are very durable and have great electrical conductivity. TLC lugs are suitable for various copper tube lug applications. With these copper lug, it is easier to maintain the electrical systems and make the connections reliable.

### Customization:

Customized Tubular Cable Lugs.

Product features:

Brand Name: TLC

Model Number: TLK

Place of Origin: China

Minimum Order Quantity: 1000 pcs

Packaging Details: Carton  
Delivery Time: 5-30 days  
Size: 10mm<sup>2</sup>  
Temperature Range: -40 ~+105  
Material: Copper  
Color: Silver  
Cable Range: 2.5-10mm<sup>2</sup>  
Our specialized services for Tubular Cable Lugs:

We provide customized services for Tubular Cable Lugs (also called tube lugs or crimp lugs). Our Tubular Cable Lugs are made of high-quality copper material with silver color, and the temperature range is -40 ~+105 . The size is 10mm<sup>2</sup> and the cable range is 2.5-10mm<sup>2</sup>. We have a minimum order quantity of 1000 pcs with packaging details of carton. Our delivery time is 5-30 days.

## Support and Services:

Tubular Cable Lugs Technical Support and Service

We are dedicated to providing our customers with the highest quality Tubular Cable Lugs. We offer technical support and service to ensure that you are getting the most out of your Tubular Cable Lug product.

Technical Support

We provide a variety of technical support services for our customers. This includes troubleshooting issues, providing information on product installation, answering questions, and providing access to our technical library of technical documentation and diagrams.

Product Service

We also provide product service for our Tubular Cable Lugs. This includes product repairs and replacements, product maintenance, and product upgrades. Our team of technicians is trained to handle any issues that may arise.

Customer Support

We also provide customer support for our Tubular Cable Lugs. This includes answering questions, providing product information, and helping customers with any product-related issues that they may have.

## Packing and Shipping:

Packaging and Shipping for Tubular Cable Lugs

Tubular cable lugs are securely packaged and shipped to ensure they are not damaged during delivery. Packaging for the lugs includes durable, heavy-duty fiberboard boxes with an interior foam lining to protect the lugs from shock and vibrations. The boxes are sealed with industrial-grade tape and labeled with the product name and quantity.

For shipping, tubular cable lugs are typically shipped via air cargo, ground shipping, or a combination of both. Air cargo is the fastest shipping option and is often used when the lugs are needed urgently. Ground shipping is slower but is the most cost-effective option. All shipments are tracked and insured for the full value of the order.

## FAQ:

Q1: What is the brand name of Tubular Cable Lugs?

A1: The brand name of Tubular Cable Lugs is TLC.

Q2: What is the model number of Tubular Cable Lugs?

A2: The model number of Tubular Cable Lugs is TLK.

Q3: Where is the place of origin of Tubular Cable Lugs?

A3: The place of origin of Tubular Cable Lugs is China.

Q4: What is the minimum order quantity of Tubular Cable Lugs?

A4: The minimum order quantity of Tubular Cable Lugs is 1000 pcs.

Q5: How about the packaging and delivery time of Tubular Cable Lugs?

A5: The packaging of Tubular Cable Lugs is Carton and the delivery time is 5-30 days.



**TLC TERMINALS TECHNOLOGY LIMITED**



+8615338876153



joe@t-terminals.com



cableslugs.com

4B Huafeng Industrial Park Baolong 1 Road Baolong Street, Longgang District, Shenzhen City