

## 16-120mm<sup>2</sup> Round Copper High Power Tube Cable Lug Tubular Lugs Terminals JG16 JG35 TLC JG120

### Our Product Introduction

#### Basic Information

- Place of Origin: China
- Brand Name: TLC
- Certification: UL, CUL, CE
- Model Number: JG
- Minimum Order Quantity: 1000
- Price: USD
- Packaging Details: bag, carton package
- Delivery Time: 5-30 working days
- Payment Terms: T/T
- Supply Ability: 800K pcs per month



#### Product Specification

- Color: Silver
- Material: Copper
- Shape: Round
- Application: Electrical Connections
- Product Name: Copper Tube Terminals
- Package: Carton
- Highlight: 120mm<sup>2</sup> Round Copper Terminal tlc,  
tlc tubular cable lugs 16mm<sup>2</sup>,  
tlc tubular cable lugs 120mm<sup>2</sup>



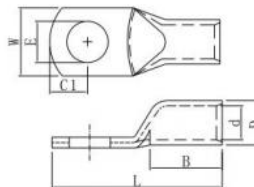
## Product Description



## Non-Insulated - Copper Lugs

## TUBULAR LUGS TERMINALS

Material  
Terminal Body: Copper  
Plating: Tin



WIRE RANGE	STUD SIZE		ITEM NO	DIMENSION mm							P/N	QTY BOX
	mm <sup>2</sup> (A.W.G.)	Metric		E	D	d	W	B	L	C1		
16 (6)	8	1/4	JG16-6	6.5	9	6	13	18	40	8.5	T-12098201	200
	8	5/6	JG16-8	8.5							T-12098202	
25 (4)	6	1/4	JG25-6	6.5	10.0	7.0	14.0	19.0	45.0	9.0	T-12098203	
	8	5/6	JG25-8	8.5						7.8	T-12098204	
	10	3/8	JG25-10	10.5						8.3	T-12098205	
35 (2)	6	1/4	JG35-6	6.4	11.0	8.0	16.0	22.0	50.0	11.0	T-12098206	100
	8	5/6	JG35-8	8.5							T-12098207	
	10	3/8	JG35-10	10.5							T-12098208	
50 (1/0)	6	1/4	JG50-6	6.4	13.0	10.0	18.5	23.0	54.5	12.0	T-12098209	50
	8	5/6	JG50-8	8.5							T-12098210	
	10	3/8	JG50-10	10.5							T-12098211	
	12	1/2	JG50-12	13.0							T-12098212	
70 (2/0)	8	5/6	JG70-8	8.5	16.0	12.0	22.5	25.0	60.0	12.0	T-12098213	
	10	3/8	JG70-10	10.5							T-12098214	
	12	1/2	JG70-12	13.0							T-12098215	
95 (3/0)	8	5/6	JG95-8	8.5	17.0	13.4	24.5	26.0	66.0	14.0	T-12098216	50
	10	3/8	JG95-10	10.5							T-12098217	
	12	1/2	JG95-12	13.0							T-12098218	
120 (4/0)	8	5/6	JG120-8	8.5	20.0	16.0	29.0	28.0	72.0	15.0	T-12098219	
	10	1/2	JG120-10	10.5							T-12098220	
	12	1/2	JG120-12	13.0							T-12098221	

## Product Description:

Lugs Terminals and Their Significance

Lugs terminals are essential components in electrical systems. They effectively establish secure and reliable connections between wires or cables and electrical devices or equipment. Therefore, their proper installation is always necessary in order for the electrical system to maintain optimal performance and safety. /p

## Features:

Lugs terminals are essential components in electrical systems and play a vital role in connecting wires or cables to different electrical devices or equipment.

These small metal connectors are usually crimped or soldered onto the ends of the wires to ensure a secure and reliable connection to the terminals. Lugs come in a wide range of sizes and shapes to suit different wire gauges and terminal types.

## Applications:

For a strong and reliable electrical connection, lugs and terminals are essential. Not only do they ensure efficient transfer of electrical power or signals, but they also help prevent loose connections. These loose connections can cause poor performance, overheating and sometimes even electrical failures.

It is therefore important to use correctly installed lugs and terminals for all types of electrical circuitry to ensure safe and reliable operation. Properly installed lugs and terminals ensure that all electrical powers and signals are transmitted safely and without any disruption.

## Support and Services:

### Technical Support and Service for Copper Tube Terminals

We provide technical support and service for our Copper Tube Terminals products. Our experienced team of experts is available to answer any questions you may have about installation, operation, or maintenance. We also provide troubleshooting assistance and can suggest best practices for optimal performance. Our commitment to quality and customer service ensures that you will have a positive experience with our products.

For technical support, please contact us at:

Phone: +1 (800) 555-1234

Email: [support@coppertube.com](mailto:support@coppertube.com)

Thank you for choosing Copper Tube Terminals!

## Packing and Shipping:

### Copper Tube Terminals Packaging and Shipping

Copper Tube Terminals are packaged in individual boxes to protect them from any physical damage during shipping. The boxes are labeled clearly with the copper tube terminal product information. The boxes are then carefully placed in adequate-sized shipping crates, which are sealed and labeled with the required shipping information. The crates are then shipped to the customer.

## FAQ:

### Q: What is the brand name of the copper tube terminals?

A: The brand name of the copper tube terminals is TLC.

### Q: What is the model number of the copper tube terminals?

A: The model number of the copper tube terminals is TYF and T.

### Q: Where are the copper tube terminals manufactured?

A: The copper tube terminals are manufactured in China.

### Q: What certifications do the copper tube terminals have?

A: The copper tube terminals have UL, CUL, and CE certifications.

### Q: What is the minimum order quantity for the copper tube terminals?

A: The minimum order quantity for the copper tube terminals is 1000.



**TLC TERMINALS TECHNOLOGY LIMITED**



+8615338876153



[joe@t-terminals.com](mailto:joe@t-terminals.com)



[cableslugs.com](http://cableslugs.com)

4B Huafeng Industrial Park Baolong 1 Road Baolong Street, Longgang District, Shenzhen City